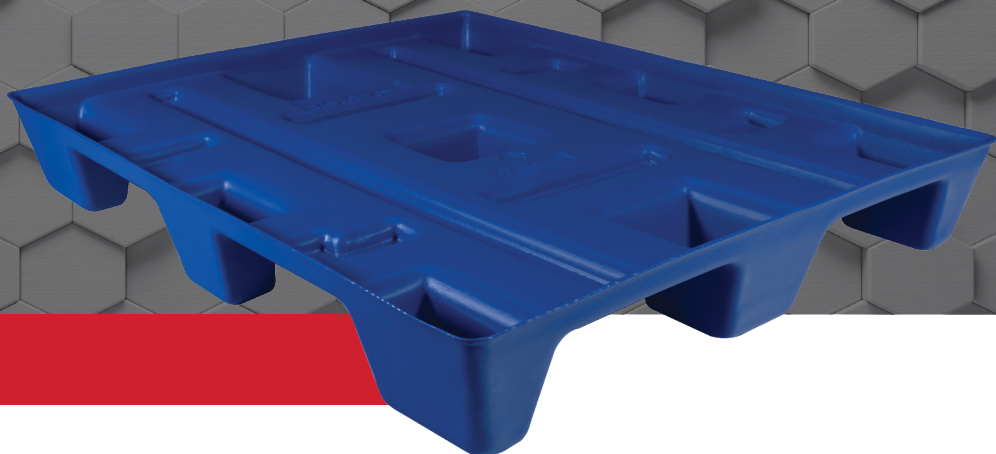


42 X 42 PALLET

SINGLE SHEET, MEDIUM-DUTY SERIES











THERMOFORMED HDPE

TECHNICAL DATA

PL Number	97-2036
OD Length	42.00 in
OD Width	42.00 in
ID Length	41.00 in
ID Width	41.00 in
Estimated Weight	15.75 lb
Estimated Quantity Per 53' Truck Load	1,500

AVAILABLE CUSTOM OPTIONS

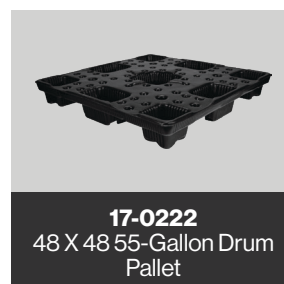
-  **ORIENTATION STRIPES**
-  **RFID TECHNOLOGY**
-  **CUSTOM COLORS**
-  **MOLD-IN CUSTOM LOGOS**
-  **UV INHIBITORS**
-  **CUSTOM LABELS**
-  **MOLD-IN NOMENCLATURE**
-  **REINFORCEMENT BARS**

**TAKE ADVANTAGE
OF OUR BUYBACK
PROGRAM!**

Our packaging is 100% recyclable and reusable. Email us to find out how you can capitalize on our Buyback Program.



FEATURED PRODUCTS



 2800 Auburn Ct, Auburn Hills, MI 48326 |  (248) 852-3731 |  sales@peninsulaplastics.com

At Peninsula Plastics, we are committed to providing you with high-quality pallets designed to meet a variety of needs. To ensure optimal performance, it's essential to evenly distribute loads and consider factors such as load configuration, support conditions, transportation, load retention, facility handling, and temperature.

Our guidelines are based on thorough testing and are intended to help you make informed decisions. However, please note that these guidelines are provided for reference only and do not constitute any warranty or guarantee regarding the suitability of our pallets for your specific application. Due to the lack of standardized industry test methodologies and rating criteria, it is crucial that you assess the appropriateness of our pallets for your unique needs. Peninsula Plastics does not assume any responsibility for the performance of our pallets in your specific application; the responsibility for validation and risk lies entirely with the customer.