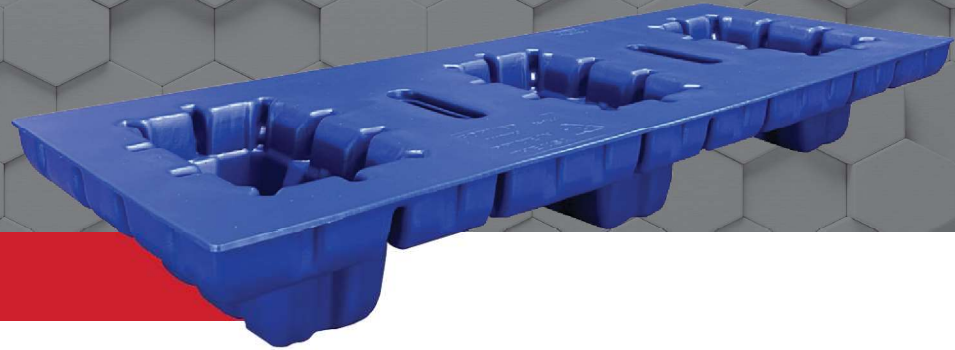


18 X 48 PALLET

TWIN-SHEET, MEDIUM-DUTY



THERMOFORMED HDPE

TECHNICAL DATA

PL Number	23-0114
OD Length	48.00 in
OD Width	18.00 in
ID Length	48.00 in
ID Width	18.00 in
Estimated Weight	12.50 lb
Estimated Quantity Per 53' Truck Load	1360

AVAILABLE CUSTOM OPTIONS

-  ORIENTATION STRIPES
-  RFID TECHNOLOGY
-  CUSTOM COLORS
-  MOLD-IN CUSTOM LOGOS
-  UV INHIBITORS
-  CUSTOM LABELS
-  MOLD-IN NOMENCLATURE

**TAKE ADVANTAGE
OF OUR PALLET
BUYBACK PROGRAM!**

Our pallets are 100% recyclable and reusable. Email us to find out how you can capitalize on our Buyback Program.



FEATURED PRODUCTS

