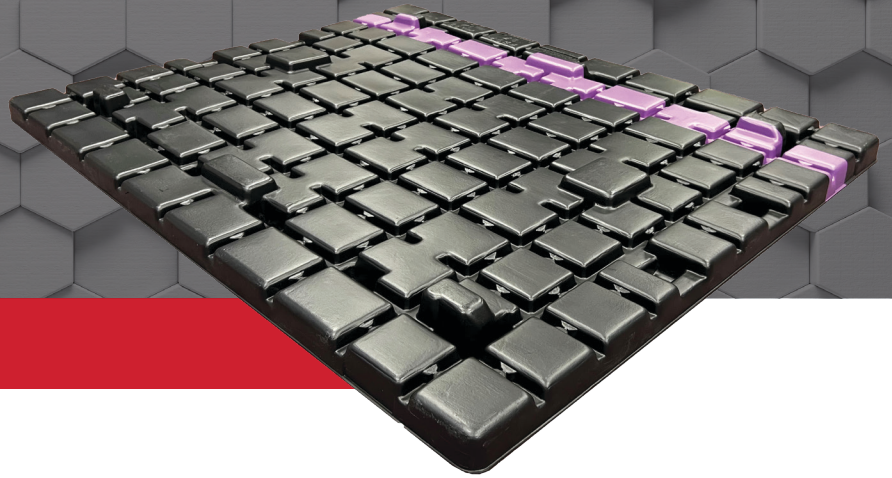


45 X 54 SS-LID

SINGLE-SHEET, HEAVY-DUTY











THERMOFORMED HDPE

TECHNICAL DATA

PL Number	20-0130
OD Length	50.76 in
OD Width	60.97 in
ID Length	45.98 in
ID Width	55.60 in
Estimated Weight	27.20 lb
Estimated Quantity Per 53' Truck Load	1100

AVAILABLE CUSTOM OPTIONS

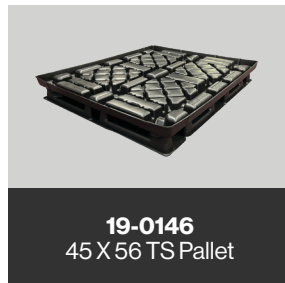
-  ORIENTATION STRIPES
-  RFID TECHNOLOGY
-  CUSTOM COLORS
-  MOLD-IN CUSTOM LOGOS
-  UV INHIBITORS
-  CUSTOM LABELS
-  MOLD-IN NOMENCLATURE
-  SEAT BUCKLES

**TAKE ADVANTAGE
OF OUR PALLET
BUYBACK PROGRAM!**

Our Pallets are 100% recyclable and reusable. Email us to find out how you can capitalize on our Buyback Program.



COMPATIBLE PRODUCTS



19-0146
45 X 56 TS Pallet