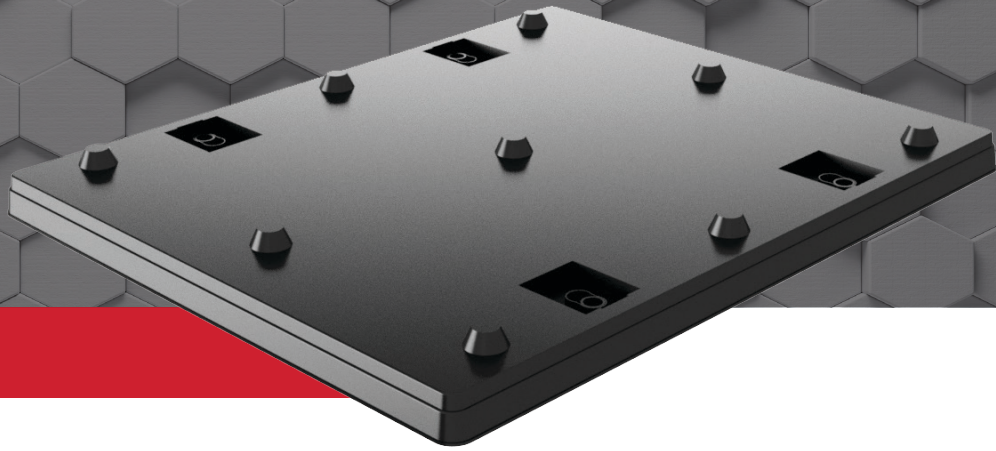


# 45 X 48 LID

TWIN-SHEET, MEDIUM-DUTY



**THERMOFORMED HDPE**

## TECHNICAL DATA

PL Number	19-0107
OD Length	45.00 in
OD Width	48.00 in
ID Length	42.50 in
ID Width	45.50 in
Estimated Weight	15.40 lb
Estimated Quantity Per 53' Truck Load	780

## AVAILABLE CUSTOM OPTIONS

- ORIENTATION STRIPES
- RFID TECHNOLOGY
- CUSTOM COLORS
- MOLD-IN CUSTOM LOGOS
- UV INHIBITORS
- CUSTOM LABELS
- MOLD-IN NOMENCLATURE
- SLEEVE TRACK
- SEAT BUCKLES

**TAKE ADVANTAGE  
OF OUR PALLET  
BUYBACK PROGRAM!**

Our Pallets are 100% recyclable and reusable. Email us to find out how you can capitalize on our Buyback Program.



## COMPATIBLE PRODUCTS

