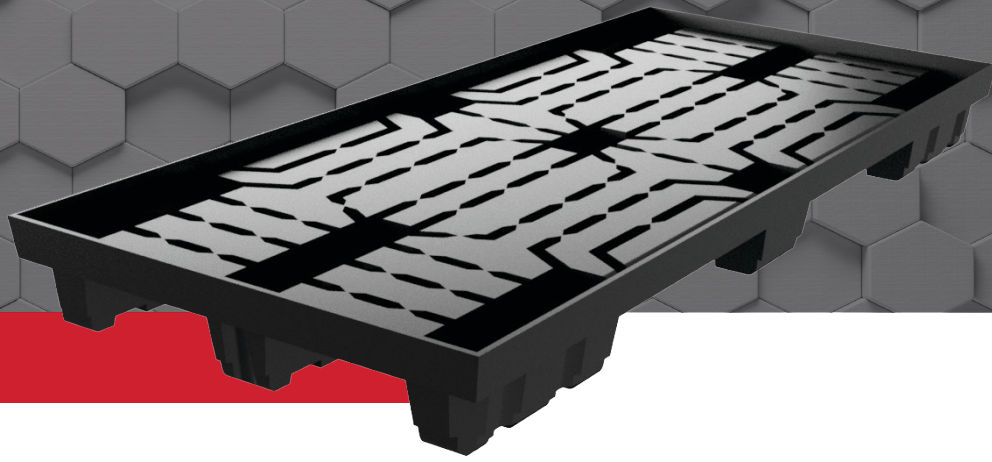


28 X 64 PALLET

SINGLE-SHEET, MEDIUM-DUTY











THERMOFORMED HDPE

TECHNICAL DATA

PL Number	01-0300
OD Length	28.75 in
OD Width	64.50 in
ID Length	27.63 in
ID Width	63.44 in
Estimated Weight	21.50 lb
Estimated Quantity Per 53' Truck Load	1,620

AVAILABLE CUSTOM OPTIONS

-  ORIENTATION STRIPES
-  RFID TECHNOLOGY
-  CUSTOM COLORS
-  MOLD-IN CUSTOM LOGOS
-  UV INHIBITORS
-  CUSTOM LABELS
-  MOLD-IN NOMENCLATURE
-  SLEEVE TRACK

**TAKE ADVANTAGE
OF OUR PALLET
BUYBACK PROGRAM!**

Our Pallets are 100% recyclable and reusable. Email us to find out how you can capitalize on our Buyback Program.



COMPATIBLE PRODUCTS

