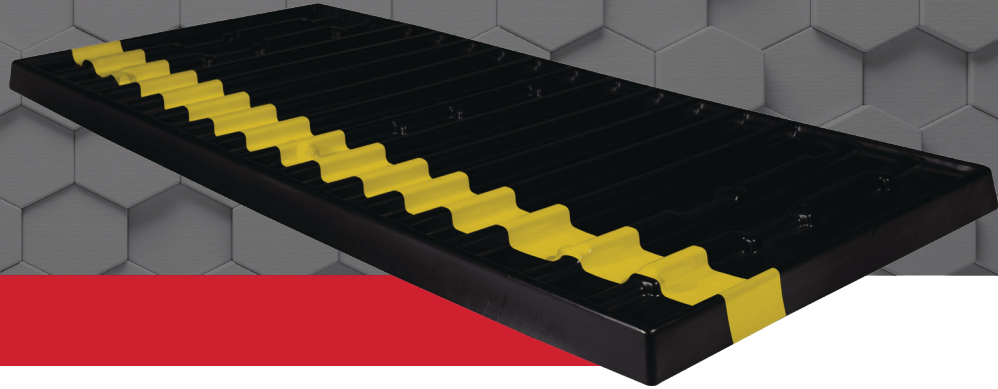


29 X 59 LID

SINGLE-SHEET, LIGHT-DUTY











THERMOFORMED HDPE

TECHNICAL DATA

PL Number	98-0214
OD Length	29.00 in
OD Width	59.00 in
ID Length	28.00 in
ID Width	58.00 in
Estimated Weight	14.40 lb
Estimated Quantity Per 53' Truck Load	3,000

AVAILABLE CUSTOM OPTIONS

-  ORIENTATION STRIPES
-  RFID TECHNOLOGY
-  CUSTOM COLORS
-  MOLD-IN CUSTOM LOGOS
-  UV INHIBITORS
-  CUSTOM LABELS
-  MOLD-IN NOMENCLATURE
-  SLEEVE TRACK

**TAKE ADVANTAGE
OF OUR PALLET
BUYBACK PROGRAM!**

Our Pallets are 100% recyclable and reusable. Email us to find out how you can capitalize on our Buyback Program.



COMPATIBLE PRODUCTS

